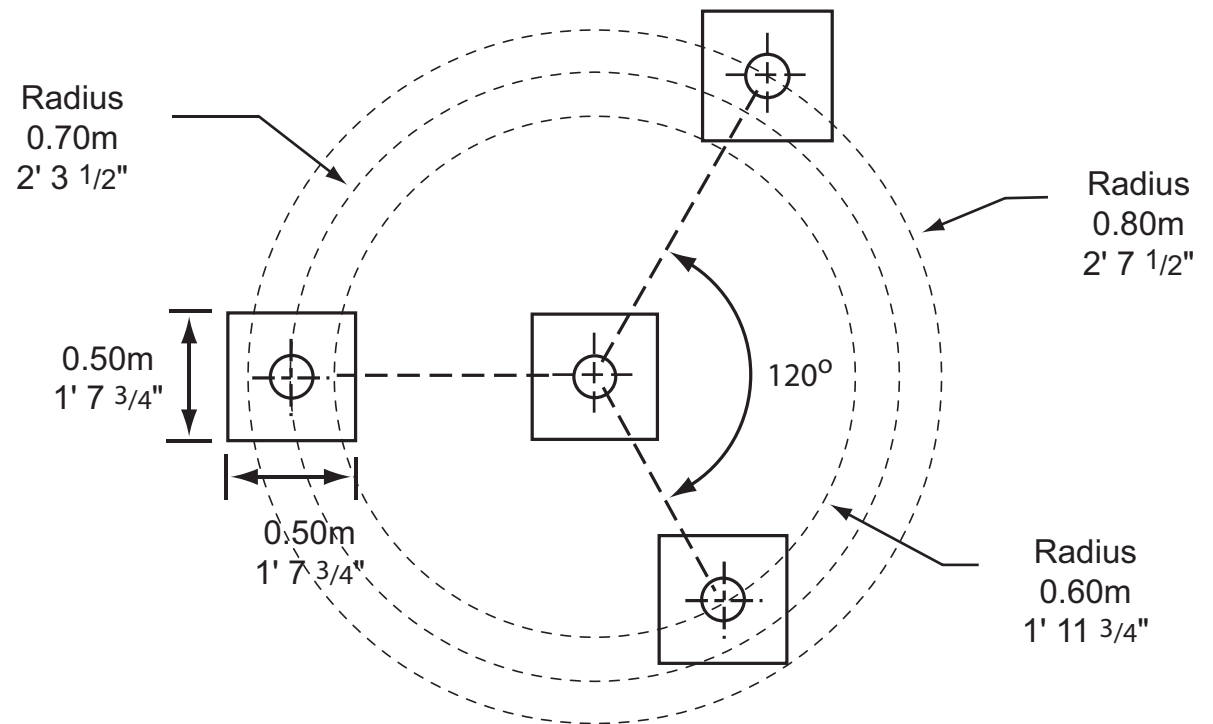


STANDING ROTATOR

Installation Diagram

OUTDOOR FITNESS

(877) 517-2200 or (719) 488-3812
support@outdoor-fitness.com



Weight

Net Weight	87.0 kgs.	192 lbs.
Ship Weight	89.0 kgs.	196 lbs.

Dimensions (installed above surface)

Diameter	1.6 m	5' 3"
Height	1.45 m	4' 9"

Note:

The distance between the rotating seats and the central bar can be decreased for younger and smaller individuals.

